



INWELL

INWELL INC.(USA)
16782 VON KARMAN AVE STE 25, IRVINE, CA92606-2418

HANGZHOU ELUM TECHNOLOGY GROUP CO., LTD.
ROOM 315, BUILDING 2, XIXI CENTURY CENTER,
JIANGDUN ROAD, 310030, HANGZHOU, CHINA

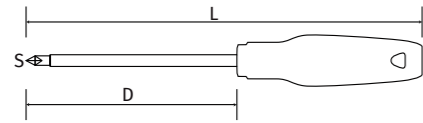
E-MAIL : SALES@INWELLPRODUCTS.COM
WEBSITE : WWW.INWELLPRODUCTS.COM

INWELL

INSULATED TOOLS

PHILLIPS SCREWDRIVERS

MOD: W 5-001

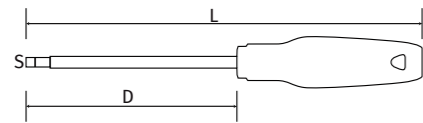


ITEM-NO.	S (mm)	D (mm)	L (mm)
W 5-001-A	PH0 x 3.0	60	135
W 5-001-B	PH1 x 5.0	80	180
W 5-001-C	PH2 x 6.0	100	206
W 5-001-D	PH3 x 8.0	150	272



SLOTTED SCREWDRIVERS

MOD: W 5-002



ITEM-NO.	S (mm)	D (mm)	L (mm)
W 5-002-A	SL 2.5 x 0.4	75	150
W 5-002-B	SL 3.5 x 0.5	100	175
W 5-002-C	SL 3.5 x 0.6	100	175
W 5-002-D	SL 4.0 x 0.8	100	175
W 5-002-E	SL 5.5 x 1.0	125	225
W 5-002-F	SL 6.5 x 1.2	150	256
W 5-002-G	SL 8.0 x 1.6	150	256
W 5-002-H	SL 8.0 x 1.6	175	297



PHILLIPS SCREWDRIVERS

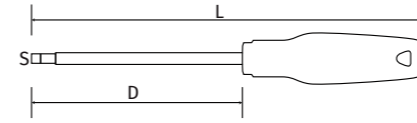
MOD: W 5-003

ITEM-NO.	S (mm)	D (mm)	L (mm)
W 5-003-A	PH0 x 3.0	60	135
W 5-003-B	PH1 x 5.0	80	180
W 5-003-C	PH2 x 6.0	100	206
W 5-003-D	PH3 x 8.0	150	272



SLOTTED SCREWDRIVERS

MOD: W 5-004

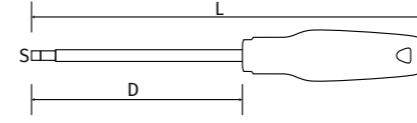


ITEM-NO.	S (mm)	D (mm)	L (mm)
W 5-004-A	SL 2.5 x 0.4	75	150
W 5-004-B	SL 3.5 x 0.5	100	175
W 5-004-C	SL 3.5 x 0.6	100	175
W 5-004-D	SL 4.0 x 0.8	100	175
W 5-004-E	SL 5.5 x 1.0	125	225
W 5-004-F	SL 6.5 x 1.2	150	256
W 5-004-G	SL 8.0 x 1.6	150	256
W 5-004-H	SL 8.0 x 1.6	175	297



SLOTTED SCREWDRIVERS

MOD: W 5-005



ITEM-NO.	S (mm)	D (mm)	L (mm)
W 5-005-A	SL 2.5 x 0.4	75	150
W 5-005-B	SL 3.5 x 0.5	100	175
W 5-005-C	SL 3.5 x 0.6	100	175
W 5-005-D	SL 4.0 x 0.8	100	175
W 5-005-E	SL 5.5 x 1.0	125	225
W 5-005-F	SL 6.5 x 1.2	150	256
W 5-005-G	SL 8.0 x 1.6	150	256
W 5-005-H	SL 8.0 x 1.6	175	297



PHILLIPS SCREWDRIVERS

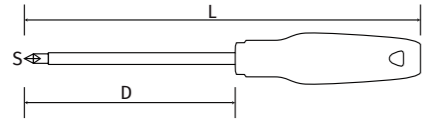
MOD: W 5-006

ITEM-NO.	S (mm)	D (mm)	L (mm)
W 5-006-A	PH0 x 3.0	60	135
W 5-006-B	PH1 x 5.0	80	180
W 5-006-C	PH2 x 6.0	100	206
W 5-006-D	PH3 x 8.0	150	272



PHILLIPS SCREWDRIVERS

MOD: W 5-007



ITEM-NO.	S (mm)	D (mm)	L (mm)
W 5-007-A	PH0 x 3.0	60	135
W 5-007-B	PH1 x 5.0	80	180
W 5-007-C	PH2 x 6.0	100	206
W 5-007-D	PH3 x 8.0	150	272



PHILLIPS SCREWDRIVERS

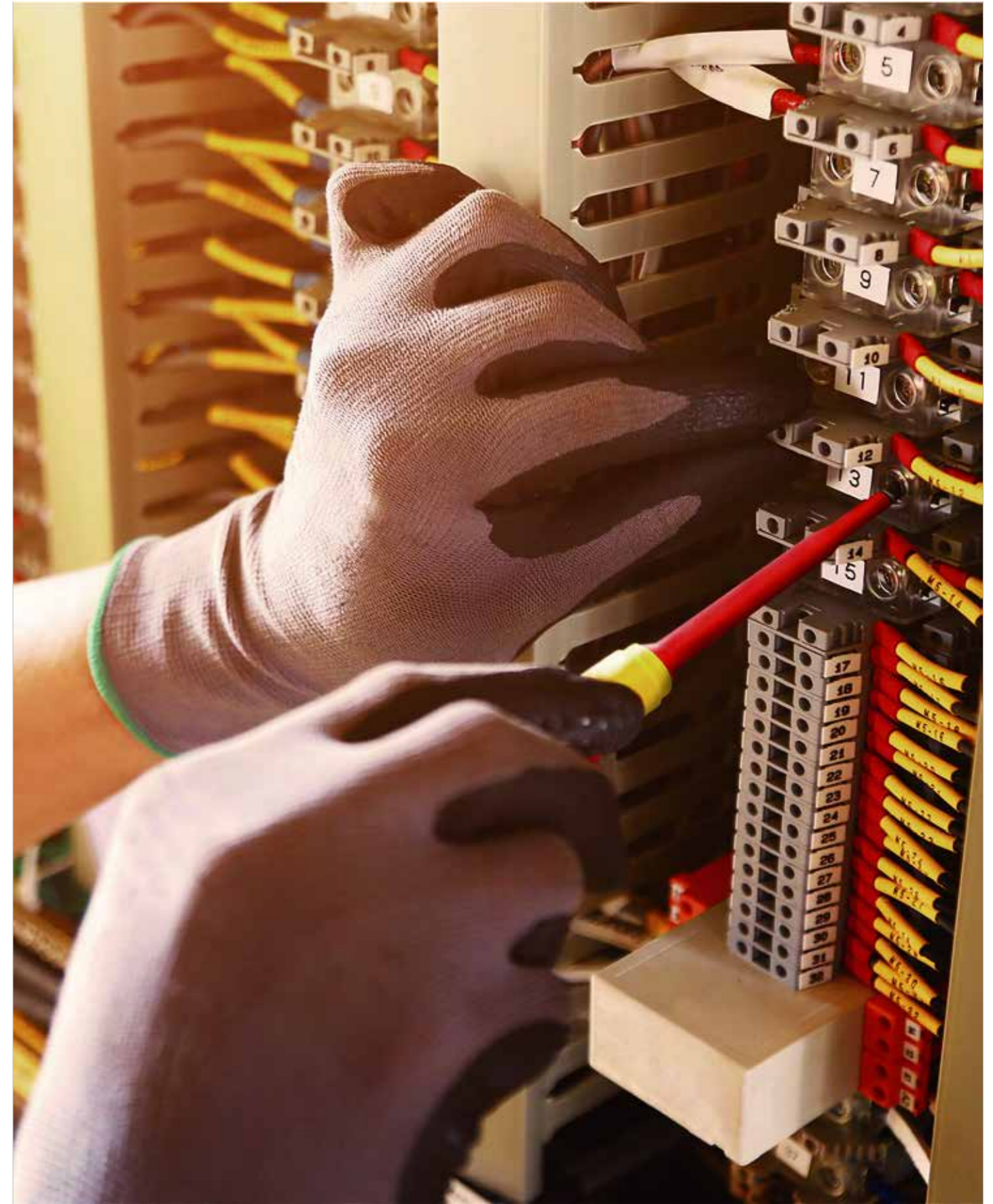
MOD: W 5-008



ITEM-NO.	S (mm)	D (mm)	L (mm)
W 5-008-A	PH0 x 3.0	60	135
W 5-008-B	PH1 x 5.0	80	180
W 5-008-C	PH2 x 6.0	100	206
W 5-008-D	PH3 x 8.0	150	272

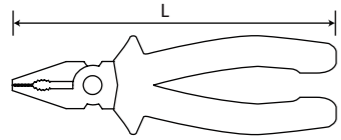


FIXED SCREWDRIVERS



COMBINATION PLIER

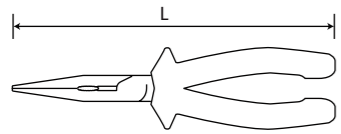
MOD: W 5-009



ITEM-NO.	SIDE	L (mm)
W 5-009-A	6"	162
W 5-009-B	7"	185
W 5-009-C	8"	200

LONG NOSE PLIER

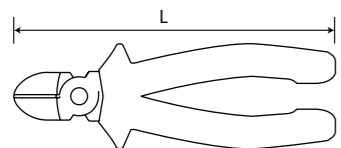
MOD: W 5-010



ITEM-NO.	SIDE	L (mm)
W 5-010-A	6"	170
W 5-010-B	8"	208

DIAGONAL CUTTING NIPPER

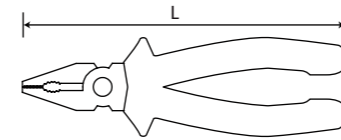
MOD: W 5-011



ITEM-NO.	SIDE	L (mm)
W 5-011-A	6"	160
W 5-011-B	7"	180

COMBINATION PLIER

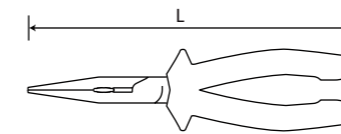
MOD: W 5-012



ITEM-NO.	SIDE	L (mm)
W 5-012-A	6"	162
W 5-012-B	7"	185
W 5-012-C	8"	200

LONG NOSE PLIER

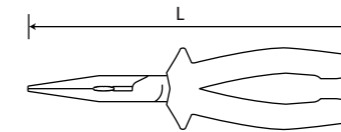
MOD: W 5-013



ITEM-NO.	SIDE	L (mm)
W 5-013-A	6"	160
W 5-013-B	8"	208

FLAT NOSE PLIER

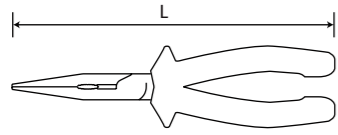
MOD: W 5-014



ITEM-NO.	SIDE	L (mm)
W 5-014	6"	160

ROUND NOSE PLIER

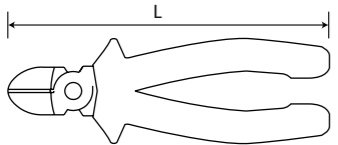
MOD: W 5-015



ITEM-NO.	SIDE	L (mm)
W 5-015	6"	160

DIAGONAL CUTTING NIPPER

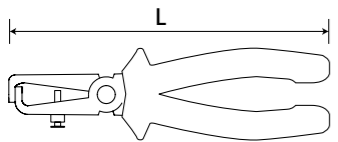
MOD: W 5-016



ITEM-NO.	SIDE	L (mm)
W 5-016-A	6"	160
W 5-016-B	7"	180

WIRE STRIPPING PLIER

MOD: W 5-017

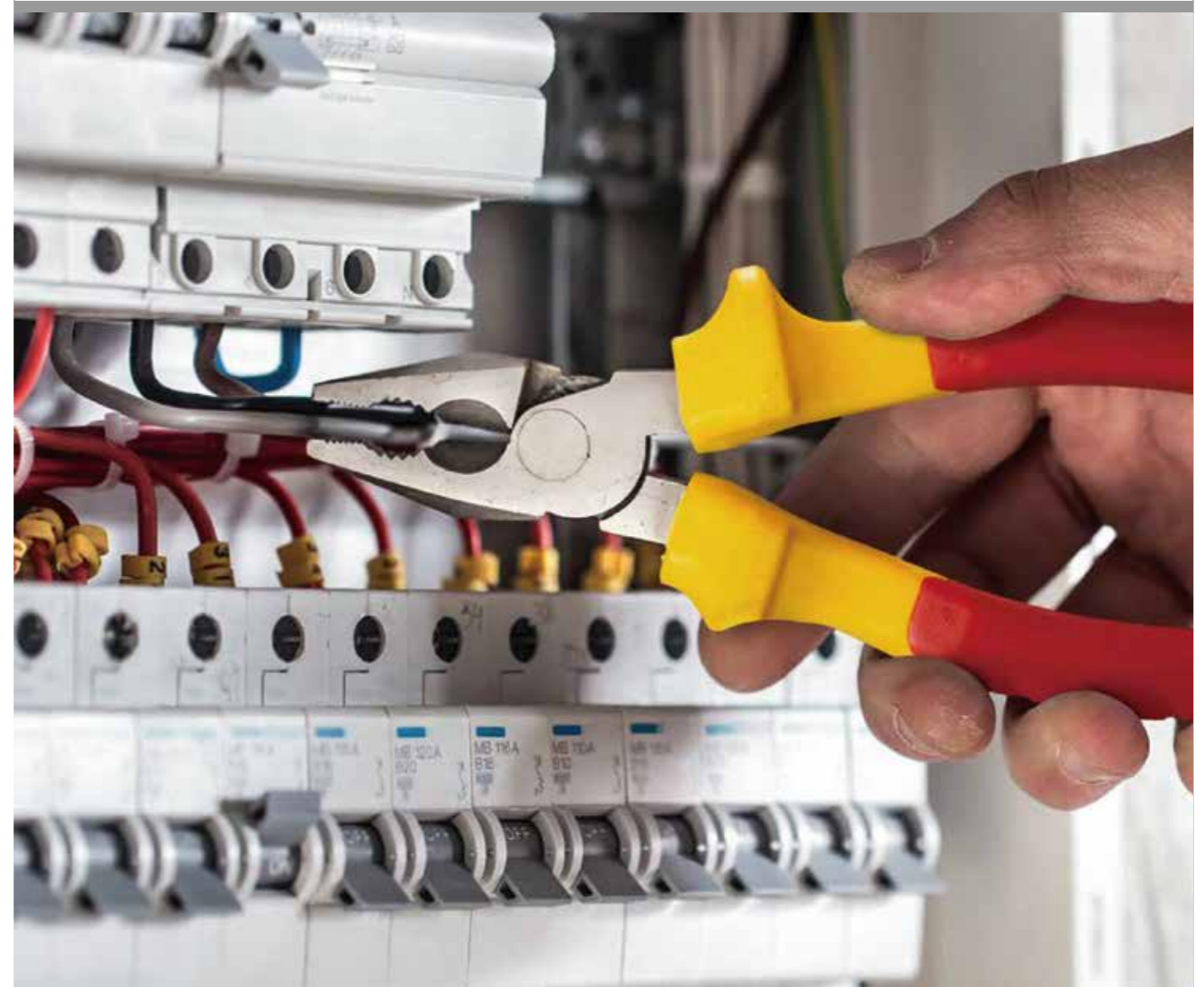


ITEM-NO.	SIDE	L (mm)
W 5-017	6"	160

D4 TYPE WATER PUMP PLIER

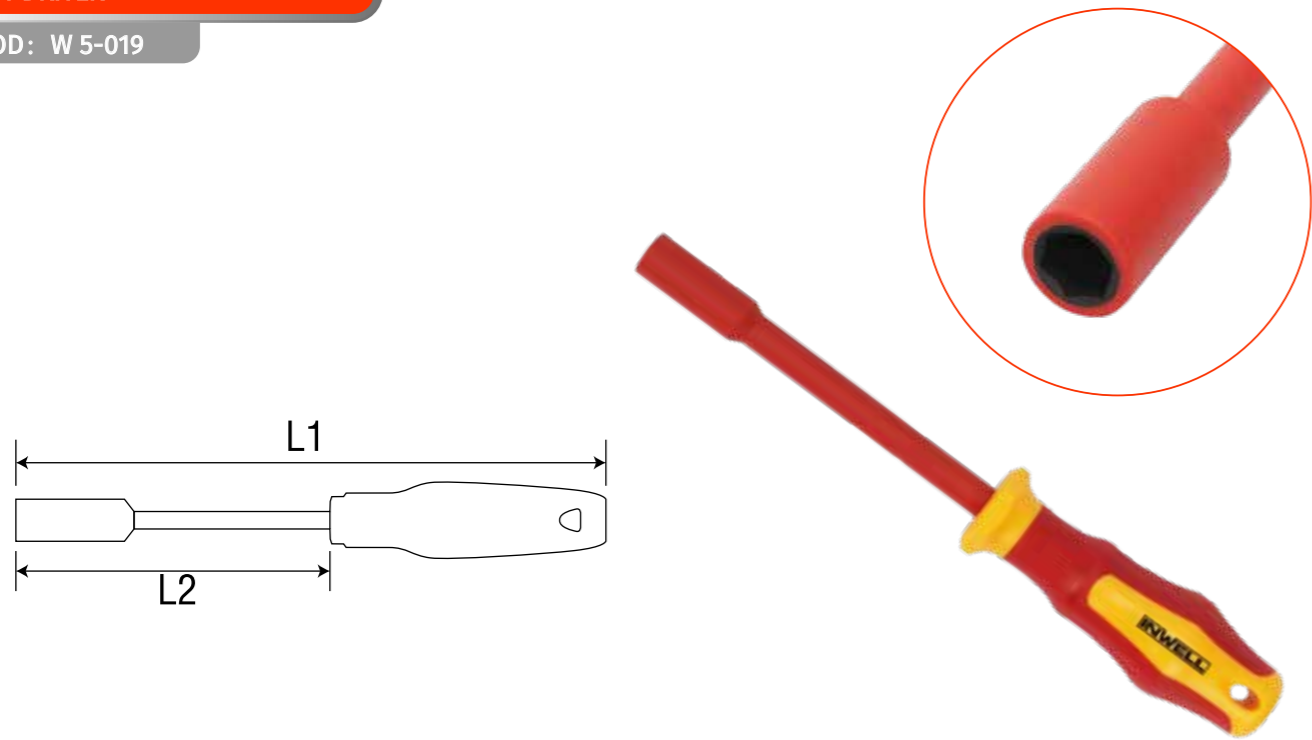
MOD: W 5-018

ITEM-NO.	SIDE	L (mm)
W 5-018	9.5"	250



NUT DRIVER

MOD: W 5-019

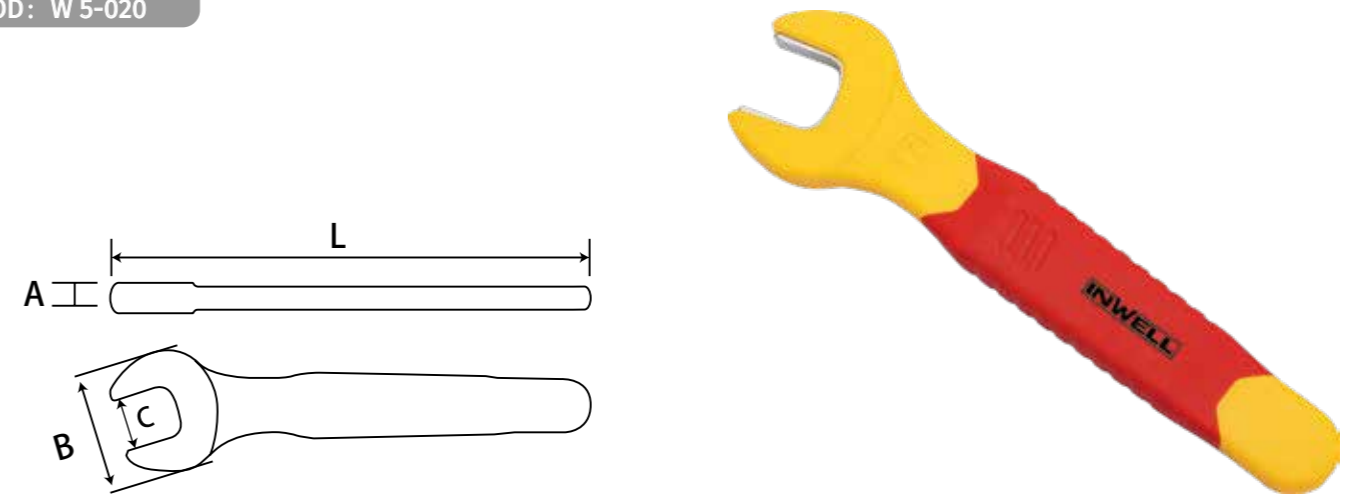


ITEM-NO.	SIDE (mm)	L1 (mm)	L2 (mm)
W 5-019-A	Nut 4.0	247	125
W 5-019-B	Nut 5.0	247	125
W 5-019-C	Nut 5.5	247	125
W 5-019-D	Nut 6.0	247	125
W 5-019-E	Nut 7.0	247	125
W 5-019-F	Nut 8.0	247	125
W 5-019-G	Nut 9.0	247	125
W 5-019-H	Nut 10.0	247	125
W 5-019-I	Nut 11.0	247	125
W 5-019-J	Nut 12.0	247	125
W 5-019-K	Nut 13.0	247	125
W 5-019-L	Nut 14.0	247	125



OPEN-END WRENCHES

MOD: W 5-020



ITEM-NO.	A(mm)	B (mm)	C (mm)	L (mm)
W 5-020-A	7	21.8	6	6
W 5-020-B	7	24	7	6
W 5-020-C	7.5	25.3	8	6
W 5-020-D	7.5	27.4	9	6
W 5-020-E	8	31	10	6
W 5-020-F	8.5	34	11	6
W 5-020-G	8.5	36	12	6
W 5-020-H	10.5	39	13	6
W 5-020-I	10.8	40	14	6
W 5-020-J	11.5	42	15	6
W 5-020-K	12.5	43	16	6
W 5-020-L	12.5	47	17	6
W 5-020-M	13	50	18	6
W 5-020-N	13	53	19	6
W 5-020-O	14	55	21	6
W 5-020-P	14	58	22	6
W 5-020-Q	14	62	24	6
W 5-020-R	14.5	62	27	6
W 5-020-S	14.5	64	30	6
W 5-020-T	15.7	68	32	6

RING WRENCHES / BOX WRENCHES

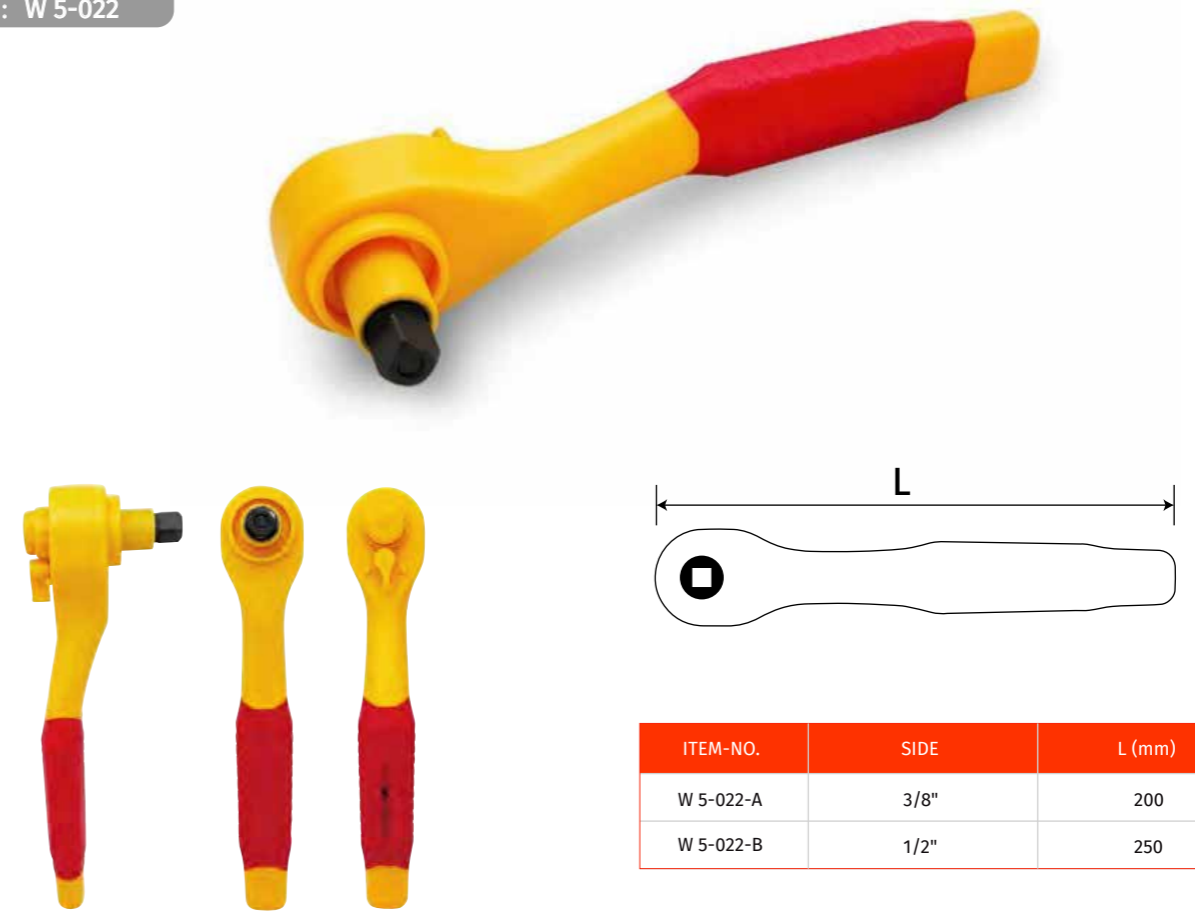
MOD: W 5-021



ITEM-NO.	A(mm)	B (mm)	C (mm)	L (mm)
W 5-021-A	7.5	15	6	129
W 5-021-B	8	16.5	7	140
W 5-021-C	8.5	19	8	150
W 5-021-D	9	20	9	160
W 5-021-E	9	21.5	10	170
W 5-021-F	9.5	24	11	180
W 5-021-G	10	24	12	190
W 5-021-H	10	26	13	200
W 5-021-I	12	26	14	210
W 5-021-J	12	28	15	216
W 5-021-K	12	29	16	216
W 5-021-L	12	30.5	17	220
W 5-021-M	13	31	18	230
W 5-021-N	13.5	33	19	240
W 5-021-O	13.5	38	21	250
W 5-021-P	14.5	38	22	260
W 5-021-Q	14.5	39	24	280
W 5-021-R	15.5	46.5	27	290
W 5-021-S	17.5	49	30	310
W 5-021-T	18.5	49	32	320

RATCHET WRENCHES

MOD: W 5-022



ITEM-NO.	SIDE	L (mm)
W 5-022-A	3/8"	200
W 5-022-B	1/2"	250

T-HANDLE WRENCHES

MOD: W 5-023



ITEM-NO.	SIDE	L (mm)
W 5-023-A	3/8"	200
W 5-023-B	1/2"	200

1/2" METRIC SOCKETS

MOD: W 5-024



ITEM-NO.	D1(mm)	D2 (mm)	D3 (mm)	L (mm)
W 5-024-A	26	19	10	12
W 5-024-B	26	20	11	12
W 5-024-C	26	22	12	12
W 5-024-D	26	23	13	12
W 5-024-E	26	24	14	12
W 5-024-F	26	25	15	12
W 5-024-G	26	25.5	16	12
W 5-024-H	26	28	17	12
W 5-024-I	26	29	18	12
W 5-024-J	26	30	19	12
W 5-024-K	26	32	21	12
W 5-024-L	26	34	22	12
W 5-024-M	26	36	24	12
W 5-024-N	26	40	27	12
W 5-024-O	26	44	30	12
W 5-024-P	26	46	32	12

3/8" METRIC SOCKETS

MOD: W 5-025



ITEM-NO.	D1(mm)	D2 (mm)	D3 (mm)	L (mm)
W 5-025-A	22	16	8	45
W 5-025-B	22	19	10	45
W 5-025-C	22	20	11	45
W 5-025-D	22	21	12	45
W 5-025-E	22	22	13	45
W 5-025-F	22	24	14	45
W 5-025-G	22	25	15	45
W 5-025-H	22	26	16	45
W 5-025-I	22	27	17	47
W 5-025-J	22	29	18	47
W 5-025-K	22	30	19	47
W 5-025-L	22	32	21	47
W 5-025-M	22	34	22	47



7 PCS INSULATED SCREWDRIVER SET

MOD: W 5-026



CONTENTS	SIDE
4 × SLOTTED SCREWDRIVERS	SL 0.4 × 2.5 × 75 mm
	SL 0.8 × 4.0 × 100 mm
	SL 1.0 × 5.5 × 125 mm
	SL 1.2 × 6.5 × 150 mm
3 × PHILLIPS SCREWDRIVERS	PH 0 × 60 mm
	PH 1 × 80 mm
	PH 2 × 100 mm



3 PCS INSULATED TOOL SET

MOD: W 5-027



CONTENTS	SIDE
1 × COMBINATION PLIER	8"
1 × LONG-NOSE PLIER	6"
1 × DIAGONAL CUTTING PLIER	6"



5 PCS INSULATED TOOL SET

MOD: W 5-028



CONTENTS	SIDE
1 × SLOTTED SCREWDRIVER	SL 1.0 × 5.5 × 125 mm
1 × PHILLIPS SCREWDRIVER	PH 2 × 100 mm
1 × COMBINATION PLIER	8"
1 × LONG-NOSE PLIER	6"
1 × DIAGONAL CUTTING PLIER	6"



9 PCS INSULATED TOOL SET

MOD: W 5-029



CONTENTS	SIDE
3 × SLOTTED SCREWDRIVERS	SL 0.4 × 2.5 × 75 mm
	SL 0.8 × 4.0 × 100 mm
	SL 1.0 × 5.5 × 125 mm
3 × PHILLIPS SCREWDRIVERS	PH 0 × 60 mm
	PH 1 × 80 mm
	PH 2 × 100 mm
1 × COMBINATION PLIER	8"
1 × LONG-NOSE PLIER	6"
1 × DIAGONAL CUTTING PLIER	6"



8 PCS INSULATED SCREWDRIVER SET

MOD: W 5-030



CONTENTS:
 1 PC 3 × 140MM 125-250V ~ VOLTAGE TESTER
7 PCS INSULATED SCREWDRIVERS:
 SL: 0.5 × 3.0 × 75 - 0.8 × 4.0 × 100 - 1.0 × 5.5 × 125 - 1.2 × 6.5 × 150MM
 PH: #0 × 75 - #1 × 80 - #2 × 100MM

7 PCS INSULATED COMBINED TOOL SET

MOD: W 5-031



CONTENTS:
 1 PC 3 × 140MM 125-250V ~ VOLTAGE TESTER
 1 PC 6" INSULATED COMBINATION PLIER
 1 PC 6" INSULATED DIAGONAL CUTTING PLIER
4 PCS INSULATED SCREWDRIVERS:
 SL: 0.8 × 4.0 × 100 - 1.0 × 5.5 × 125MM
 PH: #1 × 80 - #2 × 100MM

30 PCS DRIVER BIT SET

MOD: W 5-032



CONTENTS:
 1 PC 6" COMBINATION PLIER, VDE/GS APPROVED
 1 PC 6" DIAGONAL CUTTING PLIER, VDE/GS APPROVED
 1 PC MINI MULTIMETER, 1.5V × 1 (R61AA), CE/ ROHS
 1 PC VDE VOLTAGE TESTER 140MM, CE/GS/VDE APPROVED
 1 PC ELECTRICAL SCISSORS 140MM, STAINLESS STEEL, THICKNESS 3MM
 20P CS CABLE TIES 3 × 150MM
5 PCS VDE/GS INSULATED SCREWDRIVERS:
 SL: 1.0 × 5.5 × 125 - 1.2 × 6.5 × 150MM
 PH: #1 × 80 - #2 × 100 - #3 × 150MM

8 PCS INSULATED SCREWDRIVER SET

MOD: W 5-033



CONTENTS:
 1PC 3 × 140MM 125-250V ~ VOLTAGE TESTER
7PCS INSULATED SCREWDRIVERS:
 SL: 0.5 × 3.0 × 75-0.8 × 4.0 × 100-1.0 × 5.5 × 125-1.2 × 6.5 × 150MM
 PH: #0 × 75MM-#1 × 80MM-#2 × 100MM

7 PCS INSULATED SCREWDRIVER SET

MOD: W 5-034



CONTENTS:
 1 PC 3 × 140MM 125-250V ~ VOLTAGE TESTER
6 PCS INSULATED SCREWDRIVERS:
 SL: 0.8 × 4.0 × 100-1.0 × 5.5 × 125-1.2 × 6.5 × 150MM
 PH: #0 × 75 - #1 × 80 - #2 × 100MM

3 PCS INSULATED SCREWDRIVER SET

MOD: W 5-035



CONTENTS:
 1 PC 3 × 140MM 125-250V ~ VOLTAGE TESTER
2 PCS INSULATED SCREWDRIVERS:
 SL: 0.8 × 4.0 × 100MM
 PH: #2 × 100MM

3 PCS INSULATED SCREWDRIVER SET

MOD: W 5-036



CONTENTS:
 SL: 0.5 × 3.0 × 75MM
 PH: #1 × 80 - #2 × 100MM

4 PCS INSULATED SCREWDRIVER SET

MOD: W 5-037



CONTENTS:
 1 PC 3 × 140MM 125-250V ~ VOLTAGE TESTER
3 PCS INSULATED SCREWDRIVERS:
 SL: 0.8 × 4.0 × 100MM
 PH: #1 × 80 - #2 × 100MM

4 PCS INSULATED SCREWDRIVER SET

MOD: W 5-038



CONTENTS:
 SL: 0.8 × 4.0 × 100-1.0 × 5.5 × 125MM
 PH: #0 × 75 - #1 × 80MM

5 PCS INSULATED SCREWDRIVER SET

MOD: W 5-039



CONTENTS:
 1 PC 3 × 140MM 125-250V ~ VOLTAGE TESTER
4 PCS INSULATED SCREWDRIVERS:
 SL: 0.8 × 4.0 × 100 - 1.0 × 5.5 × 125MM
 PH: #1 × 80 - #2 × 100MM

5 PCS INSULATED SCREWDRIVER SET

MOD: W 5-040



CONTENTS:
 SL: 0.5 × 3.0 × 75-0.8 × 4.0 × 100-1.0 × 5.5 × 125MM
 PH: #1 × 80 - #2 × 100MM

6 PCS INSULATED SCREWDRIVER SET

MOD: W 5-041



CONTENTS:
 1 PC 3 x 140MM 125-250V ~ VOLTAGE TESTER
5 PCS INSULATED SCREWDRIVERS:
 SL: 0.5 x 3.0 x 75 - 0.8 x 4.0 x 100 - 1.0 x 5.5 x 125MM
 PH: #1 x 80 - #2 x 100MM

6 PCS INSULATED SCREWDRIVER SET

MOD: W 5-042



CONTENTS:
 SL: 0.5 x 3.0 x 75 - 0.8 x 4.0 x 100 - 1.0 x 5.5 x 125MM
 PH: #0 x 75 - #1 x 80 - #2 x 100MM

7 PCS INSULATED SCREWDRIVER SET

MOD: W 5-043



CONTENTS:
 SL: 0.5 x 3.0 x 75 - 0.8 x 4.0 x 100 - 1.0 x 5.5 x 125 - 1.2 x 6.5 x 150MM
 PH: #0 x 75 - #1 x 80 - #2 x 100MM

8 PCS INSULATED SCREWDRIVER SET

MOD: W 5-044



CONTENTS:
 1 PC 3 x 140MM 125-250V ~ VOLTAGE TESTER
7 PCS INSULATED SCREWDRIVERS:
 SL: 0.5 x 3.0 x 75 - 0.8 x 4.0 x 100 - 1.0 x 5.5 x 125 - 1.2 x 6.5 x 150MM
 PH: #0 x 75 - #1 x 80 - #2 x 100MM

3 PCS INSULATED SCREWDRIVER SET

MOD: W 5-045



CONTENTS:
 1 PC 3 x 140MM 125-250V ~ VOLTAGE TESTER
2 PCS INSULATED SCREWDRIVERS:
 SL: 0.8 x 4.0 x 100MM
 PH: #2 x 100MM

3 PCS INSULATED SCREWDRIVER SET

MOD: W 5-046



CONTENTS:
 SL: 0.5 x 3.0 x 75MM
 PH: #1 x 80 - #2 x 100MM

4 PCS INSULATED SCREWDRIVER SET

MOD: W 5-047



CONTENTS:
 1 PC 3 x 140MM 125-250V ~ VOLTAGE TESTER
3 PCS INSULATED SCREWDRIVERS:
 SL: 0.8 x 4.0 x 100MM
 PH: #1 x 80 - #2 x 100MM

4 PCS INSULATED SCREWDRIVER SET

MOD: W 5-048



CONTENTS:
 SL: 0.8 x 4.0 x 100 - 1.0 x 5.5 x 125MM
 PH: #0 x 75-#1 x 80MM

5 PCS INSULATED SCREWDRIVER SET

MOD: W 5-049



CONTENTS:
 1 PC 3 x 140MM 125-250V ~ VOLTAGE TESTER
4 PCS INSULATED SCREWDRIVERS:
 SL: 0.8 x 4.0 x 100 - 1.0 x 5.5 x 125MM
 PH: #1 x 80 - #2 x 100MM

5 PCS INSULATED SCREWDRIVER SET

MOD: W 5-050



CONTENTS:
 SL: 0.5 x 3.0 x 75-0.8 x 4.0 x 100 - 1.0 x 5.5 x 125MM
 PH: #1 x 80 - #2 x 100MM

6 PCS INSULATED SCREWDRIVER SET

MOD: W 5-051



CONTENTS:
 1 PC 3 x 140MM 125-250V ~ VOLTAGE TESTER
5 PCS INSULATED SCREWDRIVERS:
 SL: 0.5 x 3.0 x 75 - 0.8 x 4.0 x 100 - 1.0 x 5.5 x 125MM
 PH: #1 x 80 - #2 x 100MM

6 PCS INSULATED SCREWDRIVER SET

MOD: W 5-052



CONTENTS:
 SL: 0.5 x 3.0 x 75 - 0.8 x 4.0 x 100 - 1.0 x 5.5 x 125MM
 PH: #0 x 75 - #1 x 80 - #2 x 100MM

7 PCS INSULATED SCREWDRIVER SET

MOD: W 5-053



CONTENTS:
SL: 0.5 × 3.0 × 75 - 0.8 × 4.0 × 100 - 1.0 × 5.5 × 125 - 1.2 × 6.5 × 150MM
PH: #0 × 75 - #1 × 80 - #2 × 100MM

8 PCS INSULATED SCREWDRIVER SET

MOD: W 5-054



CONTENTS:
1 PC 3 × 140MM 125-250V ~ VOLTAGE TESTER
7 PCS INSULATED SCREWDRIVERS:
SL: 0.5 × 3.0 × 75 - 0.8 × 4.0 × 100 - 1.0 × 5.5 × 125 - 1.2 × 6.5 × 150MM
PH: #0 × 75 - #1 × 80 - #2 × 100MM

3 PCS INSULATED SCREWDRIVER SET

MOD: W 5-055



CONTENTS:
1 PC 3 × 140MM 125-250V ~ VOLTAGE TESTER
2 PCS INSULATED SCREWDRIVERS:
SL: 0.8 × 4.0 × 100MM
PH: #2 × 100MM

3 PCS INSULATED SCREWDRIVER SET

MOD: W 5-056



CONTENTS:
SL: 0.5 × 3.0 × 75MM
PH: #1 × 80 - #2 × 100MM

4 PCS INSULATED SCREWDRIVER SET

MOD: W 5-057



CONTENTS:
1 PC 3 × 140MM 125-250V ~ VOLTAGE TESTER
3 PCS INSULATED SCREWDRIVERS:
SL: 0.8 × 4.0 × 100MM
PH: #1 × 80 - #2 × 100MM

4 PCS INSULATED SCREWDRIVER SET

MOD: W 5-058



CONTENTS:
SL: 0.8 × 4.0 × 100 - 1.0 × 5.5 × 125MM
PH: #0 × 75 - #1 × 80MM

5 PCS INSULATED SCREWDRIVER SET

MOD: W 5-059



CONTENTS:
1 PC 3 × 140MM 125-250V ~ VOLTAGE TESTER
4 PCS INSULATED SCREWDRIVERS:
SL: 0.8 × 4.0 × 100 - 1.0 × 5.5 × 125MM
PH: #1 × 80 - #2 × 100MM

5 PCS INSULATED SCREWDRIVER SET

MOD: W 5-060



CONTENTS:
SL: 0.5 × 3.0 × 75 - 0.8 × 4.0 × 100 - 1.0 × 5.5 × 125MM
PH: #1 × 80 - #2 × 100MM

6 PCS INSULATED SCREWDRIVER SET

MOD: W 5-061



CONTENTS:
1 PC 3 × 140MM 125-250V ~ VOLTAGE TESTER
5 PCS INSULATED SCREWDRIVERS:
SL: 0.5 × 3.0 × 75 - 0.8 × 4.0 × 100 - 1.0 × 5.5 × 125MM
PH: #1 × 80 - #2 × 100MM

6 PCS INSULATED SCREWDRIVER SET

MOD: W 5-062



CONTENTS:
SL: 0.5 × 3.0 × 75 - 0.8 × 4.0 × 100 - 1.0 × 5.5 × 125MM
PH: #0 × 75 - #1 × 80 - #2 × 100MM

7 PCS INSULATED SCREWDRIVER SET

MOD: W 5-063



CONTENTS:
SL: 0.5 × 3.0 × 75 - 0.8 × 4.0 × 100 - 1.0 × 5.5 × 125 - 1.2 × 6.5 × 150MM
PH: #0 × 75 - #1 × 80 - #2 × 100MM

6 PCS INSULATED SCREWDRIVER SET

MOD: W 5-064



CONTENTS:
1 PC 3 × 140MM 125-250V ~ VOLTAGE TESTER
7 PCS INSULATED SCREWDRIVERS:
SL: 0.5 × 3.0 × 75 - 0.8 × 4.0 × 100 - 1.0 × 5.5 × 125 - 1.2 × 6.5 × 150MM
PH: #0 × 75 - #1 × 80 - #2 × 100MM

2 PCS INSULATED SCREWDRIVER SET

MOD: W 5-065



CONTENTS:
SL: 0.8 x 4.0 x 100MM
PH: #1 x 80MM

2 PCS INSULATED SCREWDRIVER SET

MOD: W 5-066



CONTENTS:
SL: 1.0 x 5.5 x 125MM
PH: #2 x 100MM

3 PCS INSULATED SCREWDRIVER SET

MOD: W 5-067



CONTENTS:
1 PC 3 x 140MM 125-250V ~ VOLTAGE TESTER
2 PCS INSULATED SCREWDRIVERS:
SL: 0.8 x 4.0 x 100MM
PH: #1 x 80MM

3 PCS INSULATED SCREWDRIVER SET

MOD: W 5-068



CONTENTS:
1 PC 3 x 140MM 125-250V ~ VOLTAGE TESTER
2 PCS INSULATED SCREWDRIVERS:
SL: 1.0 x 5.5 x 125MM
PH: #2 x 100MM

6 PCS INSULATED TOOL SET

MOD: W 5-069



CONTENTS:
1 PC 140MM VDE VOLTAGE TESTER
1 PC VDE ELECTRICAL TAPE
1 PC ELECTRICAL SCISSORS 140MM
3 PCS VDE/GS INSULATED SCREWDRIVERS:
SL: 1.0 x 5.5 x 125MM
PH: #1 x 80 - #2 x 100MM

7 PCS INSULATED SCREWDRIVER SET

MOD: W 5-070



CONTENTS:
1 PC 140MM VOLTAGE TESTER
1 PC 190MM VOLTAGE TESTER
5 PCS INSULATED SCREWDRIVERS:
SL: 0.5 x 3.0 x 75 - 0.8 x 4.0 x 100 - 1.0 x 5.5 x 125MM
PH: #1 x 80 - #2 x 100MM

20 PCS 3/8" RATCHET SOCKET SET

MOD: W 5-071



CONTENTS	SIDE
1 x RATCHET HANDLE	8" / 200 mm
1 x EXTENSION BAR	5" / 125 mm
1 x EXTENSION BAR	10" / 250 mm
1 x T-HANDLE	8" / 200 mm
4 x SOCKET BITS	H4 x 75, H5 x 75, H6 x 75, H8 x 75 mm
12 x SOCKETS	8, 10, 11, 12, 13, 14, 16, 17, 18, 19, 21, 22 mm

20 PCS 1/2" RATCHET SOCKET SET

MOD: W 5-072



CONTENTS	SIDE
1 x RATCHET HANDLE	10" / 250 mm
1 x EXTENSION BAR	5" / 125 mm
1 x EXTENSION BAR	10" / 250 mm
1 x T-HANDLE	8" / 200 mm
3 x SOCKET BITS	H4 x 120, H5 x 120, H6 x 120 mm
13 x SOCKETS	10, 11, 12, 13, 14, 16, 17, 18, 19, 22, 24, 27, 32 mm

